






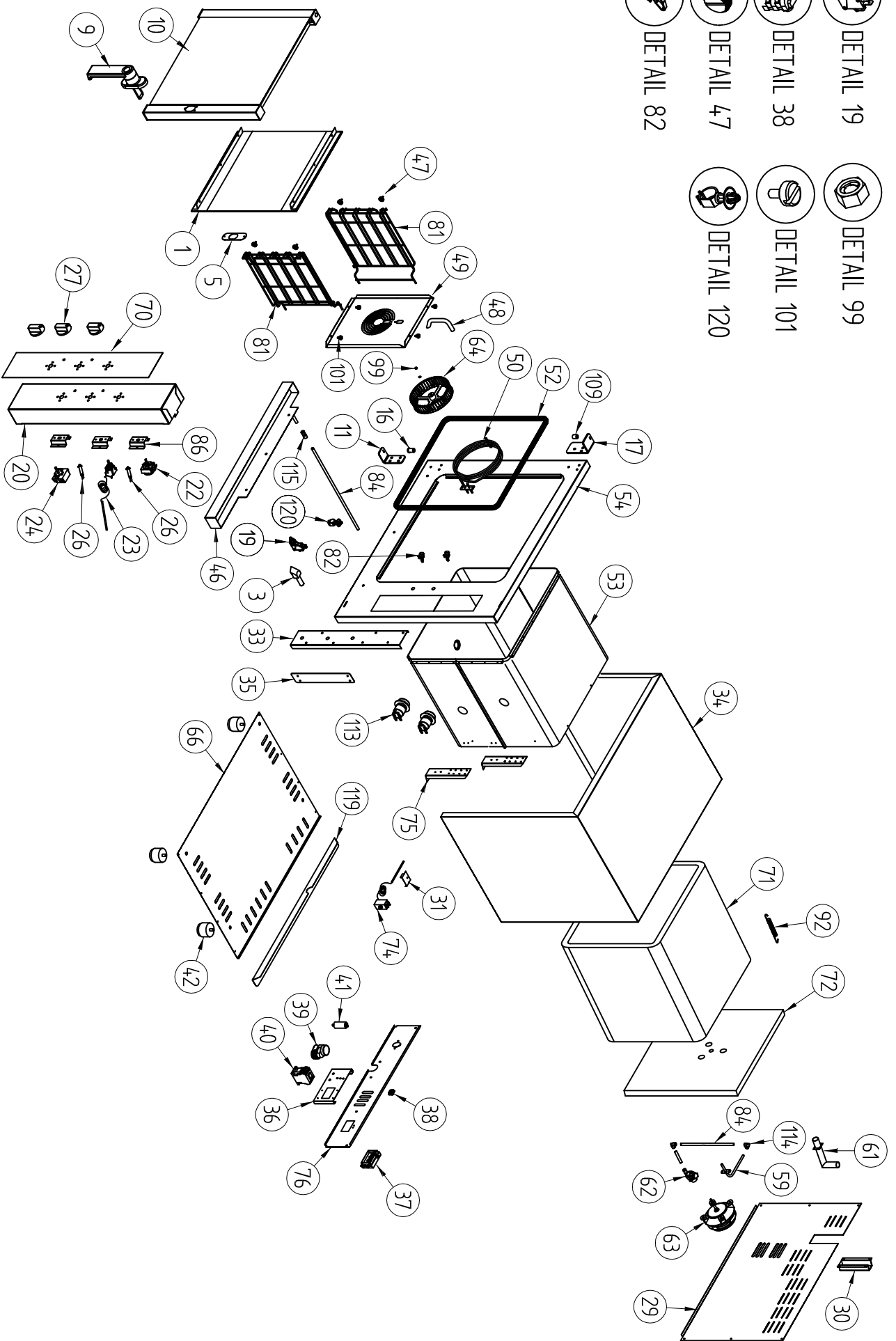



- 
DETAIL 19
- 
DETAIL 99
- 
DETAIL 38
- 
DETAIL 101
- 
DETAIL 47
- 
DETAIL 120
- 
DETAIL 82



4				
3				
2	Aggiornamento componenti forno	Conte R.		
31/03/2011	Modificato componenti porta	Conte R.		
RELEASE	MODIFICHE	FIRMA		
		TOLLERANZE: UNI 5307		
		da 1 a 6 ±0,08		
		da 6 a 18 ±0,12		
		da 18 a 50 ±0,18		
		da 50 a 80 ±0,23		
		da 80 a 120 ±0,27		
		da 120 a 250 ±0,33		
		da 250 a 400 ±0,42		
		da 400 a oltre ±0,50		
		SCALA		
				
		DATA		
		21/01/2011		
		www.pironi.it		
		DENOMINAZIONE: ESPLOSO FORNO		
		MATERIALE	MODELLO	
		..	FORNO 715RXS METCAN.	
		TRATTAMENTO	FILE	
		...	ESP30064_R02	
		DISEGNATO: CONTE R.		